

S U R G I C A L J E O P A R D Y

4.0

IMPORTANT:

For this game to work, use only the navigation buttons provided to get from one screen to another.

RASACS

RESIDENT AND ASSOCIATE SOCIETY



AMERICAN COLLEGE OF SURGEONS
*Inspiring Quality:
Highest Standards, Better Outcomes*

100+years

RASACS
RESIDENT AND ASSOCIATE SOCIETY

S U R G I C A L
J E O P A R D Y
4.0

100 Points

Most common benign tumor of
the salivary glands

100 Points

What is pleomorphic adenoma?

200 Points

Injury to this nerve results in
airway obstruction if bilateral

200 Points

What is recurrent laryngeal nerve?

300 Points

This lesion is seen in newborns,
commonly on the head and
neck, and often undergoes
spontaneous regression

300 Points

What is capillary hemangioma?

400 Points

Most common malignant tumor
of the salivary glands

400 Points

What is mucoepidermoid carcinoma?

500 Points

This eponymous temporizing maneuver involves inserting your index finger through the tracheostomy site, pointing it caudally and compressing the innominate artery anteriorly to your thumb or if lower, against the sternum to prevent exsanguination from a tracheo-innominate artery fistula

500 Points

What is the Utley maneuver?

100 Points

Size at which the risk of aortic rupture in an abdominal aortic aneurysm begins to outweigh the risks of surgical intervention at most centers in the US

100 Points

What is $>5\text{cm}$ (or 5.5cm)?

200 Points

Normal size of the small bowel/
transverse colon/cecum

200 Points

What is 3/6/9 cm?

300 Points

Size cutoff which delineates
a T1 breast cancer from a T2
breast cancer

300 Points

What is 2 cm?

400 Points

Size prompting concern in pancreatic cystic lesions

400 Points

What is $\geq 3\text{cm}$ (Sendai criteria)?

500 Points

Percentage of body surface area encompassed by 3rd degree burns of the anterior right arm and palm, and anterior right thigh in an adult

500 Points

What is 9%?

100 Points

**Diagnosis in a 3-week-old baby boy
with nonbilious projectile emesis
and a palpable olive mass on
abdominal examination**

100 Points

What is pyloric stenosis?

200 Points

**This treatment is required
before the age of 2 months
in the most common cause of
neonatal obstructive jaundice
requiring surgery**

200 Points

What is a Kasai procedure?

300 Points

The median umbilical ligament
is a remnant of this structure

300 Points

What is the urachus?

400 Points

Most common solid abdominal
tumor in children

400 Points

What is Wilm's tumor?

500 Points

Consumptive coagulopathy and thrombocytopenia associated with large hemangiomas in newborns

500 Points

What is Kasabach-Merritt syndrome?

100 Points

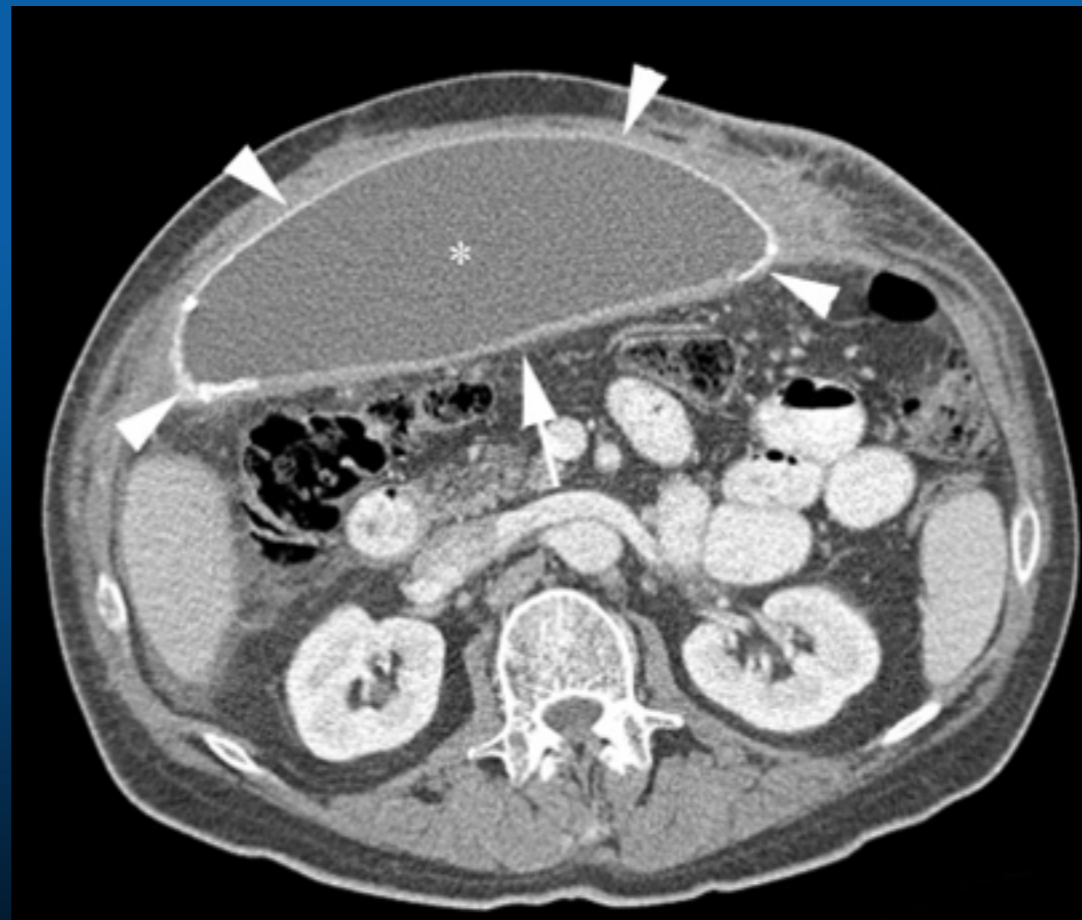
Large hernia size, long operative time, previous hernia repair, and body mass index ≥ 40 constitute risk factors for this complication following laparoscopic herniorrhaphy

100 Points

What is recurrence?

200 Points

The complication associated with laparoscopic ventral hernia repair with mesh shown here



RASACS
RESIDENT AND ASSOCIATE SOCIETY

SURGICAL
JEOPARDY
4.0

200 Points

What is a seroma?

300 Points

The anatomic region
visualized during laparoscopic
herniorrhaphy defined by the
vas deferens, spermatic cord,
and iliac vessels

300 Points

What is the triangle of doom?

400 Points

Josef Klinkosh named this hernia in the connective tissue fibers between the linea semilunaris and the lateral edge of the rectus abdominis muscle

400 Points

What is a Spigelian hernia?

DAILY DOUBLE

RASACS
RESIDENT AND ASSOCIATE SOCIETY



**Latissimus dorsi muscle,
external oblique muscle, and
iliac crest make up the borders
of this hernia**

What is a Petit's hernia?

100 Points

After a circumferential extremity burn, this procedure can be used to reduce the risk of compartment syndrome

100 Points

What is escharotomy?
(will also accept fasciotomy)

200 Points

This American criteria is used to rule out the need for radiographic imaging of the cervical spine in patients with blunt trauma

200 Points

What is the NEXUS criteria?

300 Points

Distal ureteral injury repair with reimplantation may need this extra “tweak” or “modification,” which is named for the retroperitoneal muscle used to facilitate a tension-free anastomosis

300 Points

What is a psoas hitch?

400 Points

With complications including metabolic acidosis with large treatment areas, this topical agent is often used in burn therapy because of its effective eschar penetration and efficacy against pseudomonas

400 Points

What is mafenide?

500 Points

Regardless of the ultimate quadrant of abdominal injury, this is the most frequent quadrant to find blood during a positive FAST

500 Points

What is the right upper quadrant?

100 Points

One of the primary muscle groups responsible for elbow flexion

100 Points

What is a bicep?

200 Points

Seen often in patients with hyperbilirubinemia, this clinical symptom is characterized by yellowing of the skin and eyes

200 Points

What is jaundice?

300 Points

A combination of acetaminophen, butalbital, and caffeine, this brand name medication can be used to treat tension headaches

300 Points

What is Fioricet?

400 Points

This nonmesh inguinal hernia repair involves a four-layered repair which starts with the transversalis fascia and rectus sheath

400 Points

What is a Shouldice repair?

500 Points

This highly contagious infectious disease usually of childhood has now largely been eliminated due to successful vaccination strategies, reducing the incidence of herpes zoster

500 Points

What is varicella?