

Standard 5.8: Pulmonary Resection

Operation

For any primary pulmonary resection performed with curative intent

(including non-anatomic parenchymal-sparing resections)

Resect nodes from:

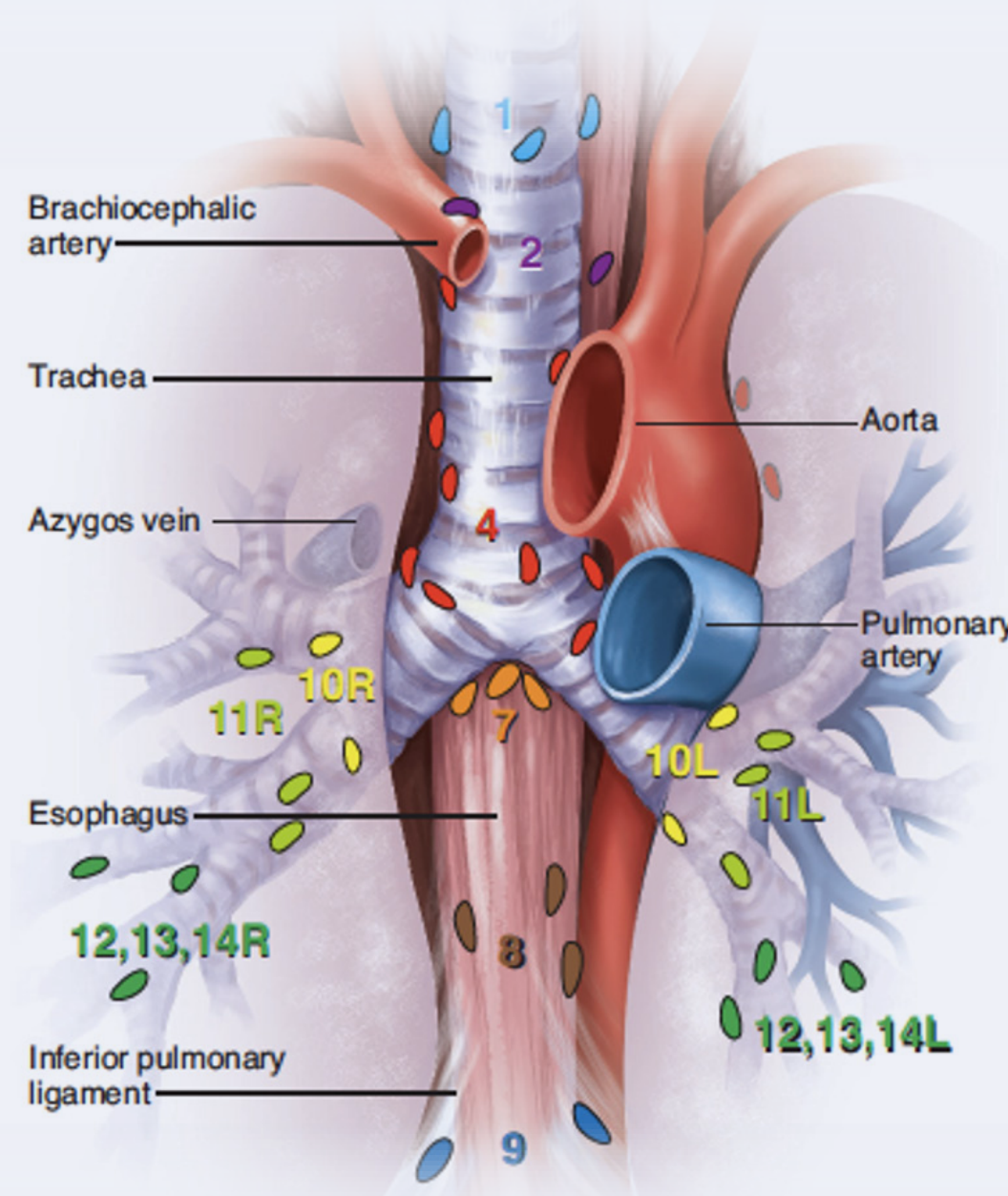


Mediastinum
(Stations 2-9)
≥3 distinct stations

Hilum
(Stations 10-14)
≥1 station

Pathology Documentation

Synoptic report documents lymph nodes from:



≥ 3 mediastinal stations

≥ 1 hilar station

with names and/or numbers of stations

When?

2021:
Implementation

2022 site visits:

70%
Compliance

Adapted from *Chest*, Vol. 111, Mountain CF, Dresler CM, Regional lymph node classification for lung cancer staging, Pp. 1718-1723, Copyright (1997), with permission from Elsevier.