

**THE IMPACT OF MANDATING TOBACCO  
USE HISTORY DOCUMENTATION  
UPON SMOKING CESSATION REFERRALS**

Edward Diaz, MD, MBA  
General Surgery Resident, PGY2  
University of Texas Rio Grande Valley  
Harlingen, Texas

1

---

---

---

---

---

---

---

---

**Disclosures**

- Nothing to Disclose

2

---

---

---

---

---

---

---

---

**Background**

3

---

---

---

---

---

---

---

---

### The Effects of Tobacco Use in Cancer Patients

- Increased risk of developing cancer
- Increased rate of surgery complications
- Increased risk of radiation therapy complications
- Decreased efficacy of chemotherapy
- Increased risk of cancer relapse
- Increased incidence of second cancers
- Increased costs for the health system

4

---

---

---

---

---

---

---

---

---

---

### Tobacco Use in Georgia

- Georgia comparable smoking prevalence as US (~15%)
- Richmond County is higher (>20%)

5

---

---

---

---

---

---

---

---

---

---



6

---

---

---

---

---

---

---

---

---

---

### Quality Improvement Initiative

- Georgia Cancer Center Cancer Committee
- Annual quality improvement projects
- American Cancer Society – Just ASK
  
- AU Tobacco Cessation Program
- AU information technology department
- AU Lung Cancer Screening Program

7

---

---

---

---

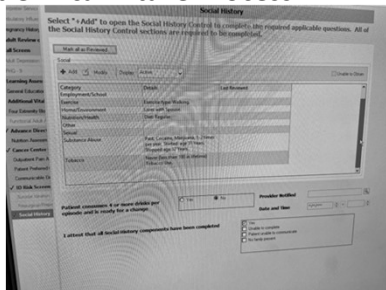
---

---

---

---

### Patient Clinical Intake Process



8

---

---

---

---

---

---

---

---

### Goal of Initiative

- Primary: Increase the number of referrals to the AU Tobacco Cessation Program from the Georgia Cancer Center (GCC)
  
- Secondary Goals:
  - Decrease the number of tobacco users at GCC
  - Increase referrals to lung cancer screening program
  - Improve the outcomes of cancer treatment
  - Improve the health of our patient population

9

---

---

---

---

---

---

---

---

**Intervention**

- Mandating the documentation of patient tobacco use during patient intake
- Tobacco Cessation Program members survey this data and contact users regarding interest in participating

10

---

---

---

---

---

---

---

---

**Results**

11

---

---

---

---

---

---

---

---

**Under Documentation**

	New cancer cases	Tobacco Users Recorded	Lung Cancer Cases
2020	2100	231	240
2021	2014	116	199
2022 (3 mos POST-intervention)	500	188	

ANOVA	SS	df	MS	F	P-value	F crit
Source of Variation						
Between Groups	2773040.11	1	2773040.11	6.8191608	0.00933062	7.20641742

12

---

---

---

---

---

---

---

---

### Change in Mean Referral Numbers

Referring Service / Month	21-Dec	22-Jan	22-Feb	22-Mar	22-May	22-Jun	22-Jul	22-Aug	22-Sep	22-Oct	22-Nov
Oncology	12	4	7	8	8	9	1	8	4	8	9
Radiation Oncology	0	0	2	3	1	1	1	2	0	0	0
Surgical Oncology	2	4	1	4	2	3	2	7	7	4	3
Urologic Oncology	0	0	0	1	1	2	0	1	2	0	1
Gynecology Oncology	0	0	0	0	2	0	2	1	0	1	1
Cardio-oncology	0	0	0	0	3	0	3	1	0	0	3
Catalyst / Downtown Oncology	0	0	0	0	1	0	0	2	0	0	3
Head/Neck Oncology	0	0	0	0	2	0	0	1	0	1	0
Psycho-oncology	0	0	0	0	0	0	0	0	0	1	0
<b>Total number of referrals</b>	<b>14</b>	<b>8</b>	<b>10</b>	<b>16</b>	<b>20</b>	<b>15</b>	<b>9</b>	<b>23</b>	<b>13</b>	<b>15</b>	<b>20</b>
<b>Number of Referring Services</b>	<b>2</b>	<b>2</b>	<b>3</b>	<b>4</b>	<b>8</b>	<b>4</b>	<b>5</b>	<b>8</b>	<b>4</b>	<b>5</b>	<b>7</b>

Overall mean monthly referral numbers increase; p=0.045  
Existing sources – No significant increase. P=0.47

13

---

---

---

---

---

---

---

---

---

---

---

---

### Potential Financial Impact – Single Clinic

Tobacco Queries	Avg Monthly Revenue	Annualized Revenue
Optional queries	\$4776	\$57312
Mandated queries	\$6169	\$74028

14

---

---

---

---

---

---

---

---

---

---

---

---

### Potential Financial Impact – Entire System

Total Referrals across system	Nov-21	Dec-21	Jan-22	Feb-22	April	May	June	Jul-22
	152	75	99	132	376	129	124	123
Dollars				\$182,284				\$299,296
Annual Projection				\$546,852				\$897,888

15

---

---

---

---

---

---

---

---

---

---

---

---

**Key Takeaways**

**Mandated Documentation:**

- Improves documentation for billing purposes
- Increases referrals for smoking cessation
- May increase referrals for lung cancer screening
- May improve cancer-related outcomes
- Improves health system finances
- Better patient care

---

---

---

---

---

---

---

---

16

**Thank you**

---

---

---

---

---

---

---

---

17