



ENDOMETRIUM MEASURE SPECIFICATIONS

Cancer Programs Practice Profile Reports (CP³R)

Introduction

The Commission on Cancer's (CoC) National Cancer Data Base (NCDB) staff has undertaken an effort to improve the transparency with which the measures in the CP³R and RQRS reporting systems are calculated. To this end, for each measure, supporting information, three tables and a flow-diagram are provided:

- The measure type, clinical rationale and references are provided.
- The **Measure Item List** table provides each cancer registry data item used in the assessment of the indicated measure. This includes the **FORDS** data item name, the North American Association of Central Cancer Registry (NAACCR) item number and a brief description of each item.
- The **Case Eligibility Criteria** table itemizes the steps taken to determine whether cases belong in the measure denominator for cases diagnosed 2010 and later. Each condition is described and is accompanied by the data item and code values used in the assessment.
- The **Numerator Criteria** table illustrates how cases are assessed to determine whether they qualify for the numerator of the measure, in other words are concordant for the standard of care.
- A **flow-diagram** is provided to illustrate the steps through which cases pass as they are evaluated for the indicated measure. The number appearing in each flow-diagram element corresponds to the assessment criteria appearing in the *Case Eligibility Criteria* and *Numerator Criteria* tables.

Note: Newly adopted measures will be integrated into CP³R prior to their release in RQRS.

Measure Definitions

This document provides specifications for the following measures:

Measure	Measure Abbreviation	Measure Type
Chemotherapy and/or radiation administered to patients with Stage IIC or IV Endometrial cancer	ENDCTRT	Surveillance
Endoscopic, laparoscopic, or robotic surgery performed for all Endometrial cancer (excluding sarcoma and lymphoma), for all stages except stage IV	ENDLRC	Surveillance

These measures were developed in conjunction with the Society of Gynecologic Oncology.

Measure Type

There are several types of measures approved by the CoC. Evidence-based measures or **accountability** measures promote improvements in care delivery and are the highest standard for measurement. These measures demonstrate provider accountability, influence payment for services and promote transparency. The **quality improvement** measure function is to monitor the need for quality improvement or remediation. Generally, these measures are for individual program use. **Surveillance** measures are used to identify the status quo, generate information for decision making, and/or to monitor patterns and trends of care. The following Table summarizes the purposes and use of these measures:

Measure Type	Measure definition and use
Accountability	High level of evidence supports the measure, including multiple randomized control trials. These measures can be used for such purposes as public reporting, payment incentive programs, and the selection of providers by consumers, health plans, or purchasers.
Quality Improvement	Evidence from experimental studies, not randomized control trials supports the measure. These are intended for internal monitoring of performance within an organization.
Surveillance	Limited evidence exist that supports the measure or the measure is used for informative purposes to accredited programs. These measures can be used for to identify the status quo as well as monitor patterns and trends of care in order to guide decision-making and resource allocation.



ENDCTRTR – Endometrial measure: Chemotherapy and/or radiation administered to patients with Stage IIIC or IV Endometrial cancer

Note: This measure applies to cases diagnosed in 2010 and later.

Measure Item List		
FORDS Data Item	NAACCR #	Description
Primary Site	400	Organ of origin of the cancer
Sex	220	Sex of patient
Age at Diagnosis	230	Age of patient at diagnosis
Sequence Number	560	Sequence of malignant and nonmalignant neoplasms over the lifetime
Histology	522	Microscopic or cellular anatomy of the cancer
Behavior Code	523	Neoplastic behavior of the cancer
Class of Case	610	Indicates the reporting facility's role in managing the cancer
CS Site-Specific Factor 1	2880	FIGO Stage
Clinical T	940	AJCC Clinical T
Clinical N	950	AJCC Clinical N
Clinical M	960	AJCC Clinical M
Pathologic T	880	AJCC Pathologic T
Pathologic N	890	AJCC Pathologic N
Pathologic M	900	AJCC Pathologic M
Surgical Procedure of the Primary Site at this facility	670	Surgical procedure of the primary site performed at this facility

Chemotherapy	1390	The type of chemotherapy administered as first course of treatment at any facility
Regional Treatment Modality	1570	Dominant Modality of radiation therapy used to deliver the most clinically significant regional dose
Reason for No Radiation	1430	Reason that no regional radiation therapy was administered to the patient
<i>Exclusion</i> <i>(This is a user field in CP³R, it is not a FORDS item)</i>	N/A	Field used to manually exclude cases

Case Eligibility Criteria			
Diagram Reference	Assessment	FORDS Item	FORDS Codes
1	Diagnosis of Endometrial cancer	Primary Site	C541
2	Exclude manually censored cases	Exclusion <i>(This is a user field in CP³R, it is not a FORDS item)</i>	Exclude: 80 - Patient enrolled in a clinical trial that directly impacts delivery of the standard of care
3	Female	Sex	2
4	Adult patient over the age of 17 at diagnosis	Age at Diagnosis	018-120
5	First or only tumor diagnosis	Sequence Number	00 or 01
6	Endometrial Carcinoma Histologies, AJCC 7 th ed.	Histology	Histology = 8000-8790, 8950-8951, 8980-8981
7	Invasive and In Situ tumors	Behavior Code	2, 3
8	All or part of the first course of treatment was performed at the reporting facility	Class of Case	10, 11, 12, 13, 14, 20, 21, 22
9	Stages IIIC, IV (<i>FIGO stage, substituted with clinical TNM where missing, followed by pathologic TNM</i>)	CS Site-Specific Factor 1 (<i>FIGO</i>)	Stage IIIC or IV by FIGO (ssf1): 330, 331, 332, 400, 410, 420; OR by AJCC Clinical TNM (<i>if FIGO is missing or unknown</i>) Stage IIIC1: Clinical T=(c1,c1A,c1B,c2,c3,c3A,c3B),N=c1,M≠(c1,p1) Stage IIIC2: Clinical T=(c1,c1A,c1B,c2,c3,c3A,c3B),N=c2,M≠(c1,p1) Stage IVA: Clinical T=c4, any N, M≠(c1,p1) Stage IVB: Clinical any T, any N, M=(c1,p1); OR by AJCC Pathologic TNM (<i>if FIGO and Clinical stage are missing or unknown</i>) Stage IIIC1: Pathologic T=(p1,p1A,p1B,p2,p3,p3A,p3B),N=p1,M≠(c1,p1) Stage IIIC2: Pathologic T=(p1,p1A,p1B,p2,p3,p3A,p3B),N=p2,M≠(c1,p1) Stage IVA: Pathologic T=p4, any N, M≠(c1,p1) Stage IVB: Pathologic any T, any N, M=(c1,p1)
		Clinical T	
		Clinical N	
		Clinical M	
		Pathologic T	
		Pathologic N	
		Pathologic M	
10	Total hysterectomy or more extensive resection at this facility	Surgical Procedure of the Primary Site at this facility	40 - 79

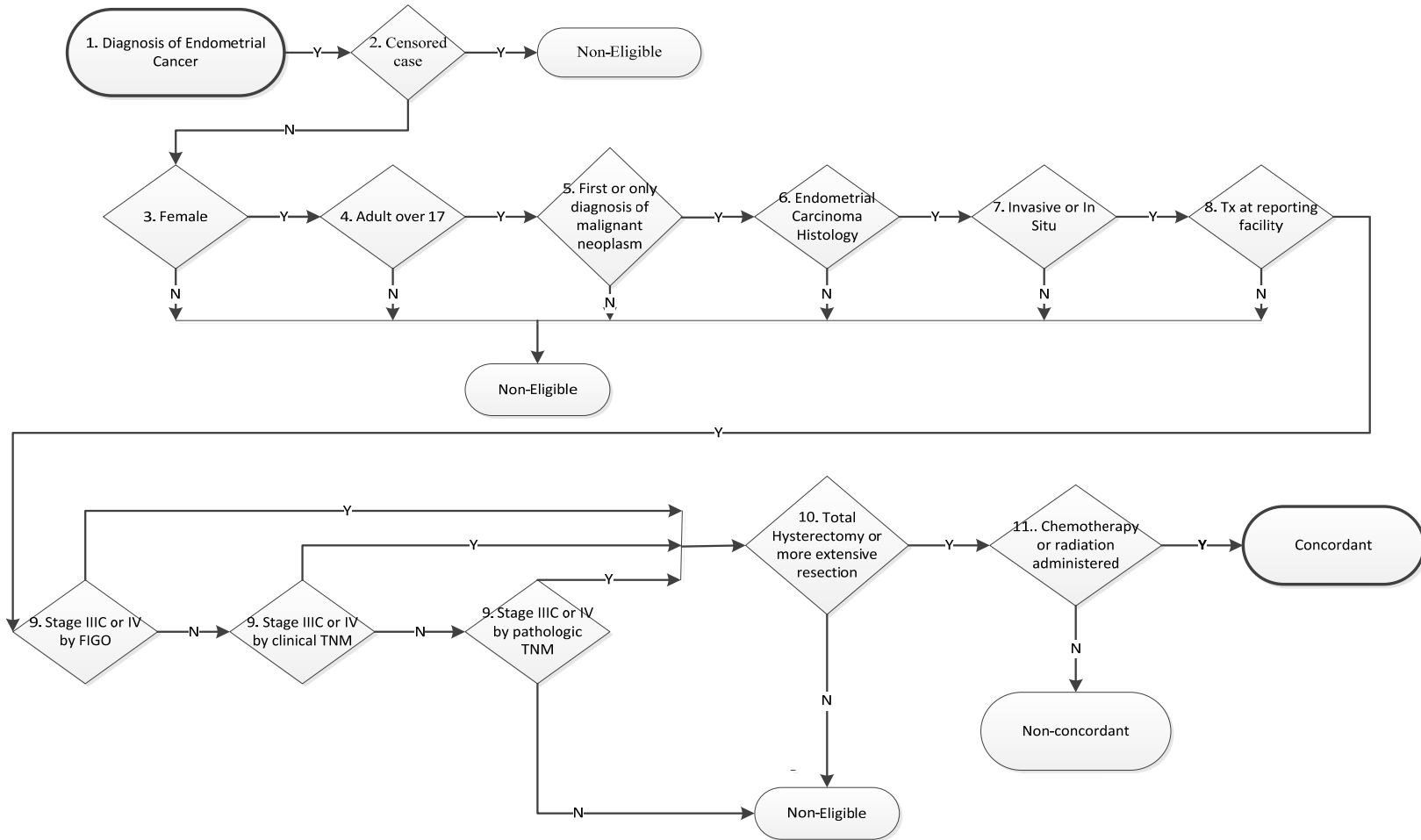
Numerator Criteria			
Diagram Reference	Assessment	FORDS Item	FORDS Codes
11	Radiation and/or chemotherapy administered <i>(This measure calculates the percentage of only chemo or radiation <u>administered</u>. Treatments recommended, missing or unknown, are "not administered" in this measure. If neither radiation or chemotherapy is administered case is non-compliant)</i>	Regional Treatment Modality	Radiation Modality 20 - 32, 40 - 43, 50 - 55, 60, 98 OR Chemotherapy 01, 02, 03
		Chemotherapy	

Notes:

- 1) September 2015 CP3R release: ENDCTRTR was introduced.
- 2) November 2015 CP3R release updates:
 - a. Allow for manual exclusion with censor 80
 - b. Edit Histology regardless of FIGO.
- 3) August 2016 updates:
 - a. NAACCRv16, add c or p prefix to TNM.



ENDCTRTR – Endometrial Measure: Chemotherapy and/or radiation administered to patients with Stage IIIC or IV Endometrial cancer





ENDLRC – Endometrial Measure: Endoscopic, laparoscopic, or robotic surgery performed for all Endometrial cancer (excluding sarcoma and lymphoma), for all stages except stage IV

Note: This measure applies to cases diagnosed in 2010 and later.

Measure Item List		
FORDS Data Item	NAACCR #	Description
Primary Site	400	Organ of origin of the cancer
Sex	220	Sex of patient
Age at Diagnosis	230	Age of patient at diagnosis
Sequence Number	560	Sequence of malignant and nonmalignant neoplasms over the lifetime
Histology	522	Microscopic or cellular anatomy of the cancer
Behavior Code	523	Neoplastic behavior of the cancer
Class of Case	610	Indicates the reporting facility's role in managing the cancer
CS Site-Specific Factor 1	2880	FIGO Stage
Clinical T	940	AJCC Clinical T
Clinical N	950	AJCC Clinical N
Clinical M	960	AJCC Clinical M
Pathologic T	880	AJCC Pathologic T
Pathologic N	890	AJCC Pathologic N
Pathologic M	900	AJCC Pathologic M
Surgical Procedure of the Primary Site at this facility	670	Surgical procedure of the primary site performed at this facility
Approach – Surgery of the Primary Site at this facility	668	Surgical method used to approach the primary site for patients undergoing surgery at this facility
<i>Exclusion</i> (This is a user field in CP ³ R, it is not a FORDS item)	N/A	Field used to manually exclude cases

Case Eligibility Criteria			
Diagram Reference	Assessment	FORDS Item	FORDS Codes
1	Diagnosis of Endometrial	Primary Site	C541
2	Exclude manually censored cases	Exclusion (This is a user field in CP ³ R, it is not a FORDS item)	Exclude: 80 - Patient enrolled in a clinical trial that directly impacts delivery of the standard of care
3	Female	Sex	2
4	Adult patient over the age of 17 at diagnosis	Age at Diagnosis	018 - 120
5	First or only tumor diagnosis	Sequence Number	00 or 01
6	Endometrial Carcinoma Histologies, AJCC 7 th ed.	Histology	Histology = 8000-8790, 8950-8951, 8980-8981
7	In Situ and invasive tumors	Behavior Code	2, 3
8	All or part of the first course of treatment was performed at the reporting facility	Class of Case	10, 11, 12, 13, 14, 20, 21, 22
9	All Stages excluding stage IV (FIGO stage, substituted with clinical TNM where missing, followed by pathologic TNM)	CS Site-Specific Factor 1 (FIGO)	<p>Stage In Situ-IIIC by FIGO (<i>ssf1</i>): 987, 100, 110, 120, 200, 300, 310, 320, 330, 331, 332; OR by AJCC Clinical TNM (<i>if FIGO is missing or unknown</i>): Stage 0-IIIB: Clinical T=(pIS,c1,c1A,c1B,c2,c3,c3A,c3B), N=c0, M≠(c1,p1) Stage IIIC1-IIIC2: Clinical T=(c1,c1A,c1B,c2,c3,c3A,c3B), N=(c1,c2),M≠(c1,p1); OR by AJCC pathologic TNM (<i>if FIGO and clinical stage are missing or unknown</i>): Stage 0-IIIB: Pathologic T=(pIS,p1,p1A,p1B,p2,p3,p3A,p3B), N=(c0,p0), M≠(c1,p1); Stage IIIC1-IIIC2: Pathologic T=(p1,p1A,p1B,p2,p3,p3A,p3B), N=(p1,p2), M≠(c1,p1)</p>
		Clinical T	
		Clinical N	
		Clinical M	
		Pathologic T	
		Pathologic N	
Pathologic M			

10	Any surgical excision or resection at this facility	Surgical Procedure of the Primary Site at this facility	20 - 90
11	All methods of surgery (<i>Exclude cases where there was no surgical procedure of primary site at this facility 0, 9</i>)	Approach - Surgery of the Primary Site at this facility	1, 2, 3, 4, 5

Numerator Criteria			
Diagram Reference	Assessment	FORDS Item	FORDS Codes
12	Robotic, endoscopic, or laparoscopic surgery performed at this facility (<i>open surgery or converted to open is non-compliant</i>)	Approach – Surgery of the Primary Site at this facility	1, 3

Notes:

- 1) September 2015 CP3R release: ENDLRC was introduced.
- 2) November 2015 CP3R release updates:
 - a. Allow for manual exclusion with censor 80
 - b. Edit Histology regardless of FIGO.
- 3) August 2016 updates in:
 - a. NAACCRv16, add c or p prefix to TNM.



ENDLRC – Endometrial Measure: Endoscopic, laparoscopic, or robotic surgery performed for all Endometrial cancer (excluding sarcoma and lymphoma), for all stages except stage IV

