

American College of Surgeons Practice-based learning system:

Installation

1. Register yourself as a user in the system – Log into the ACS Web Portal by going to <http://efacs.org> . Click on the “My Page” link at the top and then click on the “My Cases” tab. That page will contain the registration link.

Enter what you would like your login name and password to be. Enter your email address, specialty and year of birth. When done, click on Create User button.

Register User

User Information

The login name and password that will be created when you complete this form is different from your ACS member ID. Please choose a username and password that is convenient for you to remember.

LOGIN NAME*	<input type="text" value="htanzman"/>	E-MAIL ADDRESS*	<input type="text" value="myemailaddress@facs.org"/>
PASSWORD (6 OR MORE CHARACTERS)*	<input type="password" value="••••••"/>	CONFIRM PASSWORD*	<input type="password" value="••••••"/>
SPECIALTY*	<input type="text" value="General Surgery"/>	YEAR OF BIRTH*	<input type="text" value="1954"/>
FIRST NAME	<input type="text"/>	LAST NAME	<input type="text"/>
PHONE NUMBER	<input type="text"/>	STATE (2-LETTER ABBREVIATION)	<input type="text"/>

2. Sign into the system, then click download on the top toolbar.



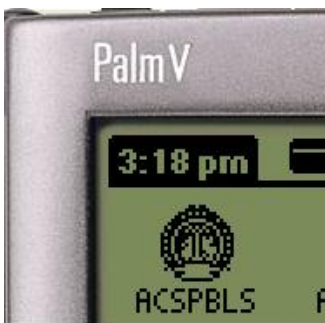
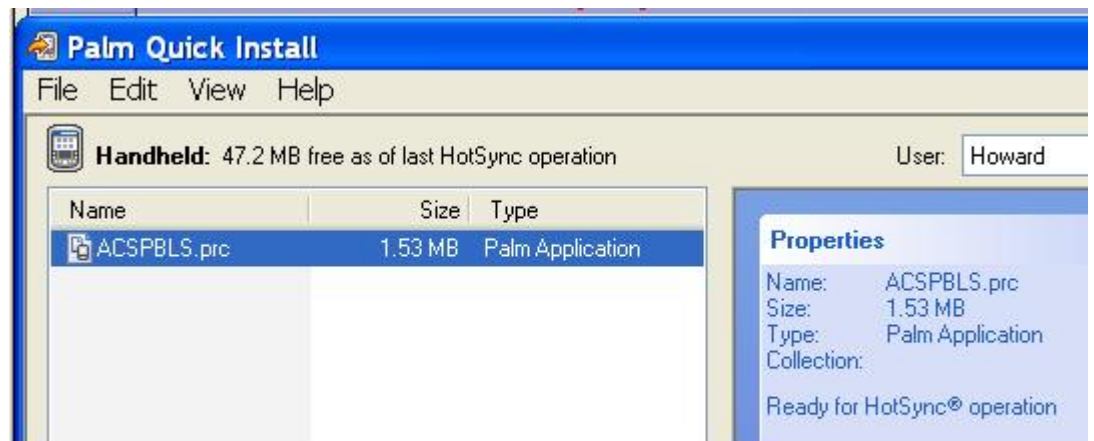
3. Download both files – one is the conduit (this is used to transfer data between the PDA and the database), the second is the Palm OS software, which will be installed onto the PDA.

ACSPBLS Downloads		
PRODUCT	VERSION	DESCRIPTION
ACSPBLS HotSync Conduit	1.1.0	The conduit runs on your desktop computer. Windows 2000 or higher is required. The Palm Desktop software that came with your Palm OS-based PDA must be installed before you install the conduit.
ACSPBLS for Palm OS	1.1.5.1	The Palm application runs on your PDA. A PDA running Palm OS 4.0 or higher with at least 5M of free memory is required. Please ensure to tap the InstallACS icon after installation. Note: We have verified that the Palm application runs on a Treo 650!

4. After the download, double click on the conduit software (ACSPBLS conduit setup.exe) to install it on your windows PC. *Ensure that the Palm Hot sync manager is not running during this installation.* You can ensure that the palm hotsync manager is not running by right mouse clicking on the hotsync icon on the system tray in the lower right hand of your PC and then selecting “exit”.



5. Using the Palm desktop software, transfer the PDA application (ACSPBLS.prc) to the PDA. Then hotsync your PDA. After the hotsync, there will be an ACSPBLS icon on your PDA with the College logo. Select this and the software will be installed onto your PDA. You will be asked to create a PDA password (which may be the same as the web password you created earlier, but does not have to be the same).



You are now ready to use the case log!