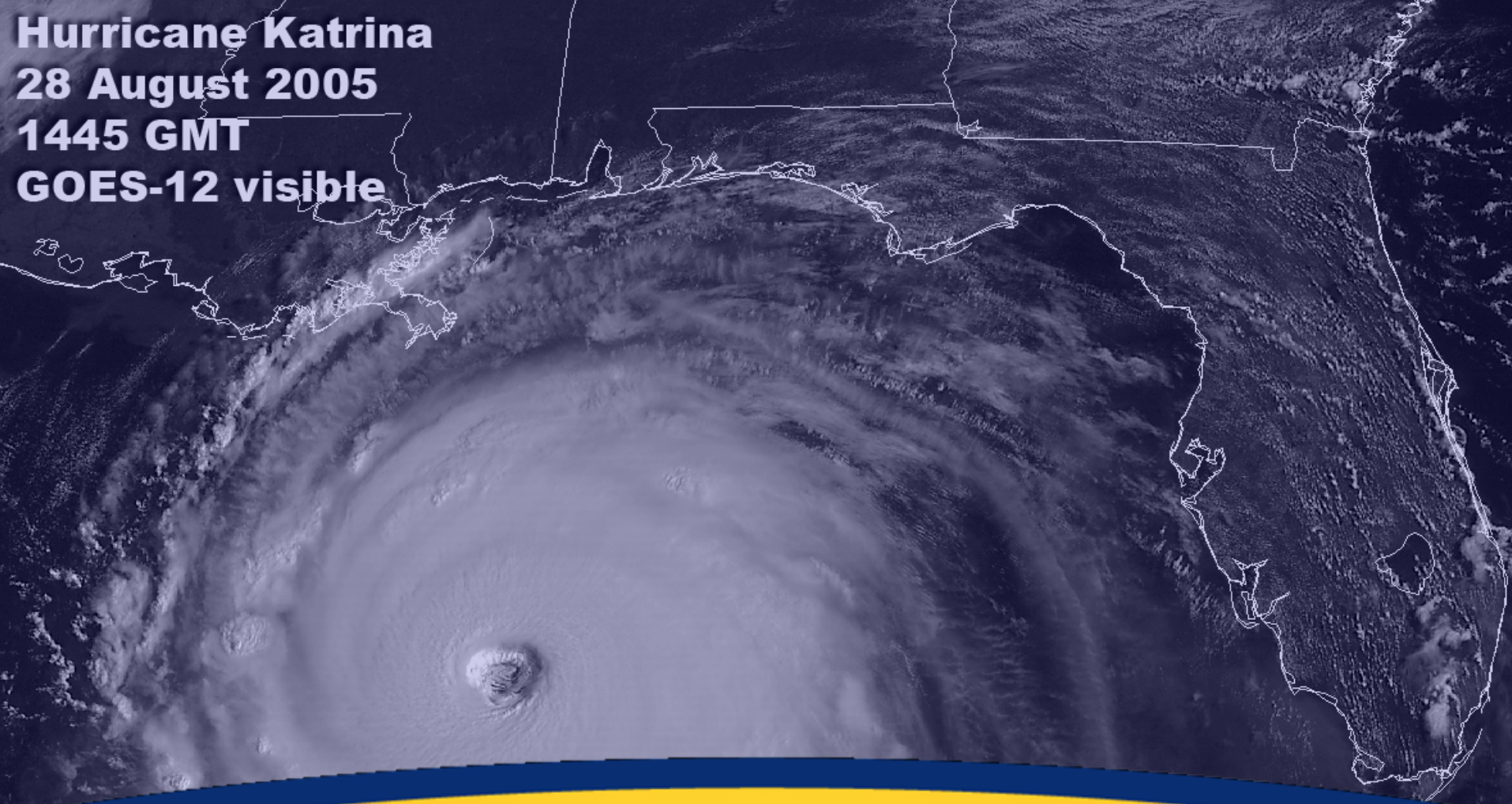


Hurricane Katrina
28 August 2005
1445 GMT
GOES-12 visible



Lessons Learned from Katrina



Mississippi River-Gulf Outlet



New Orleans Levee Breaks





Katrina By the Numbers

- **All** medical services in the city of New Orleans were rendered inoperative by flooding, wind damage, or lack of electricity, water, or sewerage.
- Only **three** hospitals in neighboring Jefferson Parish remained operational, Ochsner, East Jefferson, and West Jefferson.



Katrina By the Numbers

- Tulane Medical School was **displaced** to Houston, LSU Medical School to Baton Rouge.



Katrina By the Numbers

- **6** months after Katrina only **3 of 9** hospitals have reopened, but not at pre-Katrina capacity: Touro, Tulane and Childrens'
- **4,000** hospital beds in Metro area pre-Katrina, 2000 now
- **6,000** physicians displaced from the impacted area
- **Countless** nurses and hospital personnel



Katrina By the Numbers

- **4,500** physicians displaced from New Orleans
- **1,500** House officers from Tulane and LSU
- **3,000** physicians displaced
- Only **1,200** have returned to date
- **130** Clinical Faculty furloughed by LSU HSS
- **180** Clinical Faculty furloughed by Tulane HSC



Katrina By the Numbers

- **450,000** people evacuated from New Orleans for Katrina
- **1,000,000** evacuated from the Metro area
- **187,000** people now residing in New Orleans
- **200,000** homes damaged, **125,000** severely
- **Over half** of rental units loss



Katrina By the Numbers

- **81,000** businesses affected
- **445,000** lost jobs
- **900,000** uninsured in Louisiana pre-Katrina
- **1,200,000** uninsured post-Katrina

The background of the slide is a dark blue space-themed image showing a portion of a planet's surface with craters. A thick, bright yellow curved line arches across the top of the slide, separating the header area from the main content area.

The Survival of the Louisiana Chapter

- Contacted Rhonda
- Contacted the President & Council
- Set-Up Remote Office
- Used Web Site and E-Newsletters to communicate with members.
- Annual Meeting MUST go on...
- Find a hotel in New Orleans
- How to advertise?
- Our successes...



Develop a Plan

- With Your Leadership
- With Your Staff

The background of the slide features a dark blue gradient. At the top, there is a curved yellow band. Above this band, a portion of a satellite image of Earth is visible, showing the Western Hemisphere with the Americas and the Pacific Ocean. The main title 'Important Papers' is written in a bold, white, sans-serif font.

Important Papers

- IRS Papers
- Tax Forms
- Payroll Records
- Investment Records
- Current Projects
- Credit Card Information
- Scan all documents
- Letterhead/Envelopes

The background of the slide features a grayscale image of Earth from space, showing the curvature of the planet and some cloud patterns. A thick, bright yellow arc curves across the top of the image, separating the space scene from the dark blue background of the slide.

Valuable Items

- Historic pictures, documents etc.
- Determine storage location



Banking

- Checkbooks, deposit books etc.
- Current Financial Statement
- Banking Statements
- Online Banking
- Find a local branch of your bank
- Do you signing authority?
- Determine bills to be paid etc.

Technology

- Back up all computers (take with you!)
- Invest in laptop, Palm Pilot, and/or Blackberry
- Web Site – where hosted?
- Set Up a Email Newsletter with an outside company
- Conference Call Company
- Make a list of all computers, printers, etc.
- Do you have the ability to burn CDs?
- Bring a hardcopy of all **PASSWORDS!**

A satellite view of Earth's surface, showing clouds and landmasses, with a thick yellow curved line separating it from the dark blue background below.

Pictures! Pictures! Pictures!

- Valuable Items
- Furniture
- Technology
- All other office content
- If possible video tape



Contact Lists

- Create a contact list of all your council members (cell phone numbers, email addresses at office and home)
- Know their evacuation plans
- Obtain staff contact information
- Building Management
- Banker
- Web Site Provider
- Insurance Agent

A satellite view of Earth's surface, showing clouds and landmasses, with a thick yellow curved line separating it from the dark blue background below.

Contracts

- Employment Contract
- List of Current Projects
- Hotel Contracts
- Lease



Insurance Papers

- Review Insurance Papers
- Staff Health Insurance Papers
- D&O Insurance

The background of the slide features a dark blue space scene with a view of Earth's horizon at the top. A thick, bright yellow curved line arches across the upper portion of the slide, separating the header area from the main content.

Create Disaster Planning Kit

- Obtain plastic containers for each organization
- Create a check-list of all items you want to bring.
- Include all of the above in your kit.
- Include various office supplies – this will come in handy when you set up your remote office.
- Include a hard copy of your membership records and save to a CD-ROM.
- Print out your email list from your computer.

A satellite view of Earth's surface is visible at the top of the slide, showing cloud patterns and landmasses. A thick yellow arc curves across the top of the image, separating the satellite view from the dark blue background below.

Questions!!!